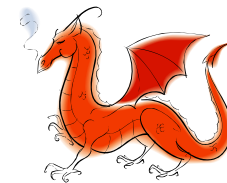


The Eye of the Dragon

QSI's Main Campus Newsletter
Volume 14: December 3, 2010



QSI Middle School Winter Concert 7:30 PM (be there at 7:00)

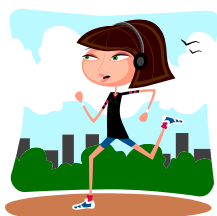
This event is extremely important due to the amount of work and time your child has put into preparing the music for this day. As performing in a concert is one

of the expectations for the Music curriculum, please make sure that your children are present for the performance. Please follow the expectations for appropriate concert dress at the performance:

- Boys should wear a nice dress shirt or polo shirt, long pants and closed toed shoes. Please, no sandals, jeans, or shorts
- Girls should wear a nice shirt, pants or a skirt and dress shoes.
- Everyone - Bring Instruments on Monday



There is a Basketball clinic at QSI Main Campus for students 11 -15 years of age this Saturday from 9:00 - 11:00. 'Longshots' is hosting the clinic and it will center on conditioning, defense and shooting for beginning players. Come and join in. Later SYSP and Longshots are hosting a winter clinic December 29th, 2010 to January 2nd 2011.



December 4th Charity Run 2Km or 10 KM at Jing Shan starts at 9:00 cost for students 50 RMB parents 150 RMB

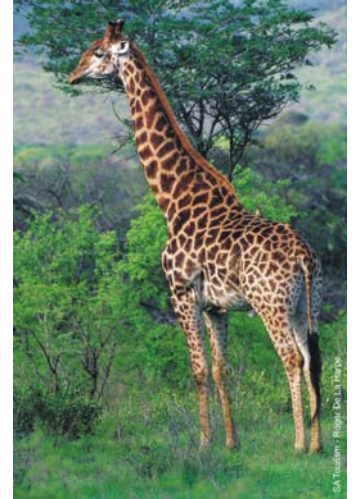


11s Visit the Zoo



This week the 11 year old class spent a day checking out the Shenzhen Zoo. We are happy to report that none were left behind and no one got eaten. That is not surprising when you

see the fine exhibits and animals available at the zoo. **Alex Schwarz** liked the White Tiger the most and enjoyed the animals doing tricks. **Michelle Zhu** like the White Tiger but also the giraffes and pointed out that those long necks have only the same number of bones humans have! She didn't like the animal tricks because she thought the animals were forced to do them.



VB Coming Soon



Mr. DeWitt, the Secondary Girls' Volleyball coach, is running a preseason practice for Middle School girls who want to get a jump on the next season here at the Middle School. The session will run from 3:00 – 5:00 on Saturday and 1:00 – 3:00 on Sunday. Emphasis will be on individual skills such as serving,

passing and spiking. All girls are welcome regardless of ability or experience. The object is to get better and gain more confidence to encourage full participation for the sport. No Touch Rugby players are allowed until after their season to help them focus on their current sport. Join the fun! See you at 3:00 Saturday. Let's make this our best season yet!



Touch Rugby Tournament Sunday and Monday

This Sunday, December 5th through Monday December 6th mark the PDRC Touch Rugby Tournament for both boys' and girls' teams. Since all the games will be played right here at our field everyone has a chance to drop by and catch some of the action. SIS is hosting the event which will be the endpoint of the season for the teams. Coaches and players would love to have your support, so please take in a game or two this weekend. Girls play Sunday at 10:40, 12:00, 2:00 and 4:00. Boys play Sunday at 10:40, 2:00 and 4:00 then again at 10:30 Monday morning. Further game times will depend on their win loss records and the overall standings from round robin play.

Mad Scientists at it Again by Mr. Smith



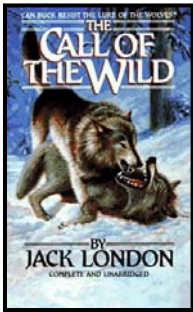
They say that only 7 percent of communication is with words and 55 percent is with our body. What happens when we lie? We use words to lie, but what do our bodies "say"? The Mad Scientists wanted to find out and asked several questions to Ms. Hammer's activity class. Students were asked to tell lies and truths. For example, students were told, "Please lie to me...what is your mother's name?" We found that when we tell the truth, we tend to keep our eyes looking forward, or looking to the right to access memory, but when we lie, we look all over the place, mostly to the left. We also noticed that when we lie, our pupils expand. Of course, it is impossible to know for sure if a person is lying simply by looking at the eyes. But as the Mad Scientists would admit, it's easier to stand beside a truth than behind a lie. So, let's all tell the truth!



Coordinator's Corner

Jack London

Call of the Wild and White Fang are two of Jack London's most popular works. Filled with adventure and colorful characters, both man and animal, the stories are fun to read, but they also build a theme of how we need the care of others to be truly 'human'.



Announcements

- Students who ride the late bus must be registered in the office ahead of time or they will not be allowed to ride the bus. Sign up in 1st floor Office.
- Tuesday December 7th 7:30 Concert – Be there at 7:00 – Bring all Instruments to School Monday!!
- Students who wish to use the gym after school must be supervised by an adult. The gym will be closed from December 11- 15 for repainting.
- The Main Campus Library is open after school for students to study. Students must remember to sign up for the late bus before 1:00 if they are bus riders. Students 9 – 11 need a signed permission slip to attend.
- Mr. Brassard will chaperone one final Sunday on December 5 for basketball at 1:00 – 3:00 join him to play some hoop! Many thanks to Mr. and Mrs. Brassard for their many hours of supervision!